

FLOW CONTROLLERS

USFilter's Wallace & Tiernan Products (USF/W&T) offers three types of flow controllers, the General Purpose Flow Controller and two Purge Flow Controllers. Each is designed to maintain a constant set flow rate regardless of variations in the line pressure. All of these basic arrangements are suitable for gas and liquid service.

The general purpose type has a broad range of applications. It can be used with almost any equipment or within any flow system in which the process fluid is compatible with stainless steel construction. It is ideally suited for USF/W&T's Armored Purge Meters, Armored Flow Meters, Direct-View Flow Meters, Glass-tube Varea-meters, and all USF/W&T Straight-through Varea-meters.

The purge-type flow controllers are engineered specifically for use with USF/W&T's Glass-tube Purge Meters, Low-flow Meters, and Armored View II Armored Purge Meters. Inlet and outlet connections match up for easy adaptation.



FEATURES

SIMPLE, DIRECT DESIGN

The clean, straight-through design makes it simple to integrate these controllers within a system. Installation piping is direct and uncomplicated.

RELIABLE AND ACCURATE OPERATION

These controllers maintain a constant set flow rate by sustaining a constant pressure drop across their orifices. The

size of the orifice is varied while the pressure drop is held constant. This balance provides a set flow despite changes in the supply pressures.

STURDY CONSTRUCTION

The housing for the general purpose controllers is constructed of 316 SS. The purge flow controller can be either 316 SS or brass construction.

FLOW CONTROLLERS

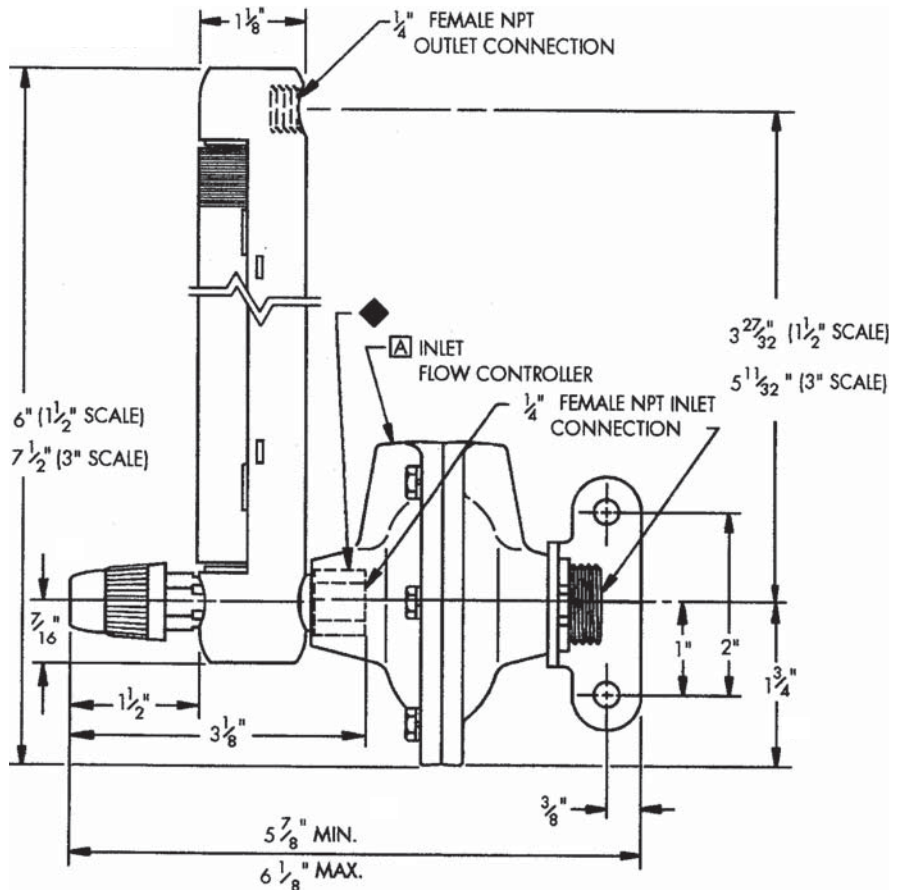
SERIES 5800 PURGE TYPE FLOW CONTROLLER

This unit is designed specifically for use with USF/W&T's Glass-tube Purge Meters and Low-flow Meters. The inlet and outlet connections are immediately compatible with the meters. Connections are simple and direct; the expense of awkward static piping is eliminated. Controllers can be used for gas or liquid, and are available in inlet and outlet configurations.

The units are available in two capacity ranges. Either capacity can be provided in brass or stainless steel construction for a choice of temperature limits.

TECHNICAL DATA

	High Cap.	Low Cap.
max. capacity gas liquid	193 SCFH 40 GPH	30 SCFH 5 GPH
maximum temperature and materials of construction	200° F – Brass (Black Paint Finish) with Buna-N Diaphragm 250° F – 316 Stainless Steel with TFE Diaphragm	
max. inlet pressure	250 psi	250 psi
pressure drop (at max. flow rate)	8 psi	6 psi
connections inlet/outlet	1/4-inch NPT	1/4-inch NPT
shipping weight	3 lbs.	3 lbs.



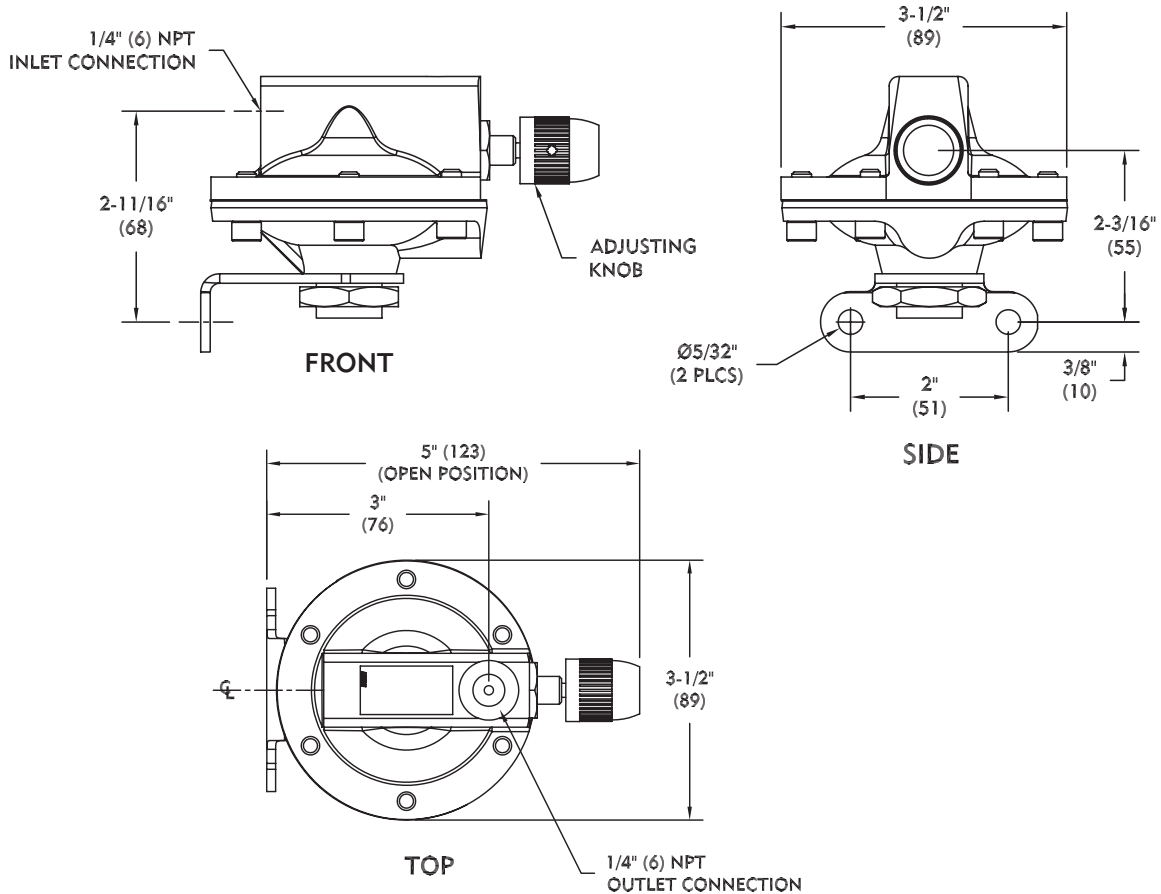
FLOW CONTROLLERS

SERIES 5750 GENERAL PURPOSE PURGE FLOW CONTROLLER

TECHNICAL DATA

This unit is designed for the control of low-volume flows of aggressive chemicals in systems with varying pressures. It maintains constant flow regardless of pressure variations. An integral control valve provides easy setting of flow rate. It is offered in 316 SS construction, for inlet and outlet configurations. It can be assembled to a purge/low-flow meter, or as a standalone in the process line.

	High Cap.	Medium Cap.	Low Cap.
max. capacity gas liquid	117 SCFH 25 GPH	23.4 SCFH 5 GPH	4.5 SCFH 0.8 GPH
maximum temperature and materials of construction	300° F – 316 Stainless Steel with TFE Diaphragm		
max. inlet pressure	350 psi	350 psi	350 psi
pressure drop (at max. flow rate)	9 psi	6 psi	6 psi
connections inlet/outlet	¼-inch NPT	¼-inch NPT	¼-inch NPT
shipping weight	4 lbs.	4 lbs.	4 lbs.



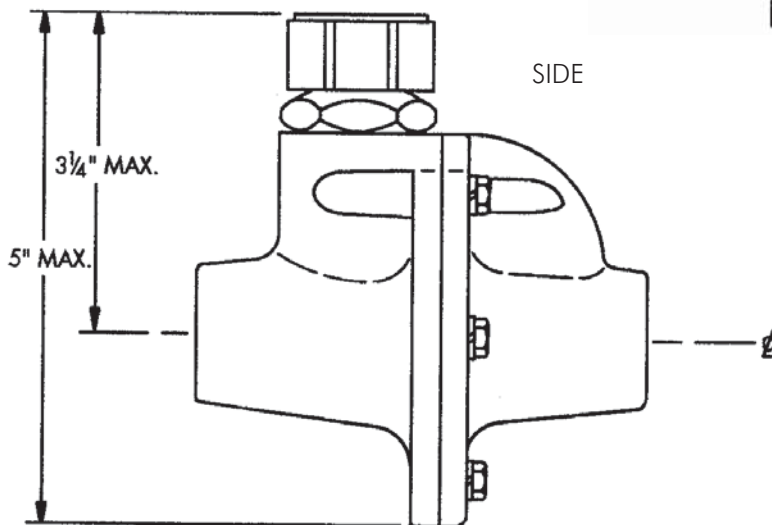
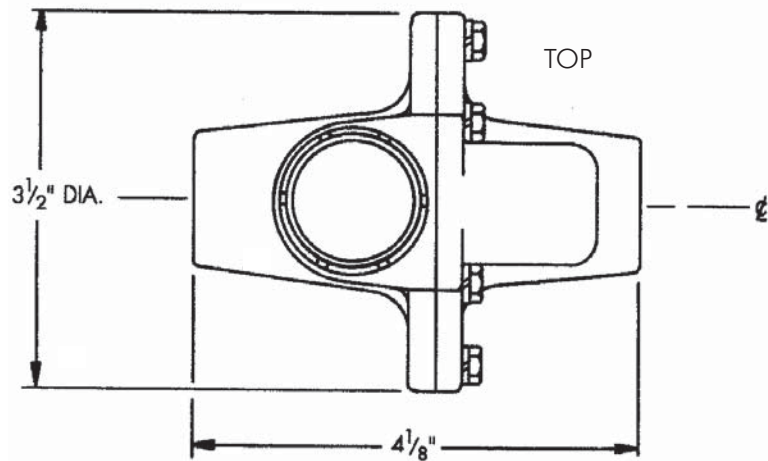
FLOW CONTROLLERS

SERIES 5700 GENERAL PURPOSE FLOW CONTROLLER

This unit can be used in any flow system in which the process fluid is compatible with the stainless steel construction. The straight-through design facilitates integration with most flow metering systems. Connections are simple and direct; expensive, awkward static piping is unnecessary. An integral control valve provides easy setting of flow rate. General purpose flow controllers are available in two capacity arrangements and can be used for liquid or gas service.

TECHNICAL DATA

	High Cap.	Low Cap.
max. capacity gas liquid	53 SCFM 10 GPM	5 SCFM 1 GPM
maximum temperature and materials of construction	450° F – 316 Stainless Steel with TFE Diaphragm	
max. inlet pressure	250 psi	250 psi
pressure drop (at max. flow rate)	25 psi	15 psi
connections inlet/outlet	¾-inch NPT	½-inch NPT
shipping weight	4½ lbs.	4½ lbs.



To find out more about how to put USFilter to work for you, contact us at



A Siemens Business

Wallace & Tiernan Products
 1901 West Garden Road
 Vineland, NJ 08360
 856.507.9000 phone
 856.507.4125 fax

For more information, call 856.507.9000 or visit our website at

<http://www.usfwt.com>
 © 2004 USFilter

USFilter Corporation reserves the right to change the specifications referred to in this literature at any time, without prior notice.
 TI 570.100 UA 10/04