

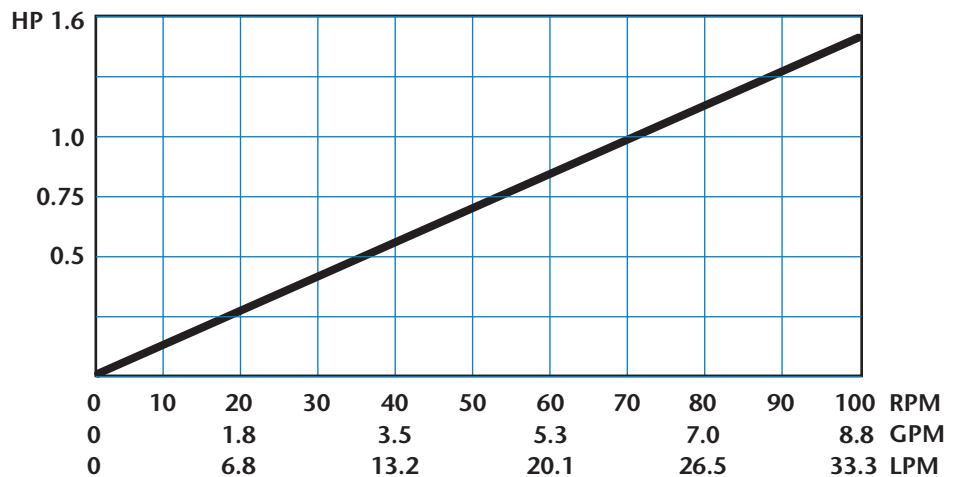
825RG Sanitary Peristaltic Metering & Transfer Pump

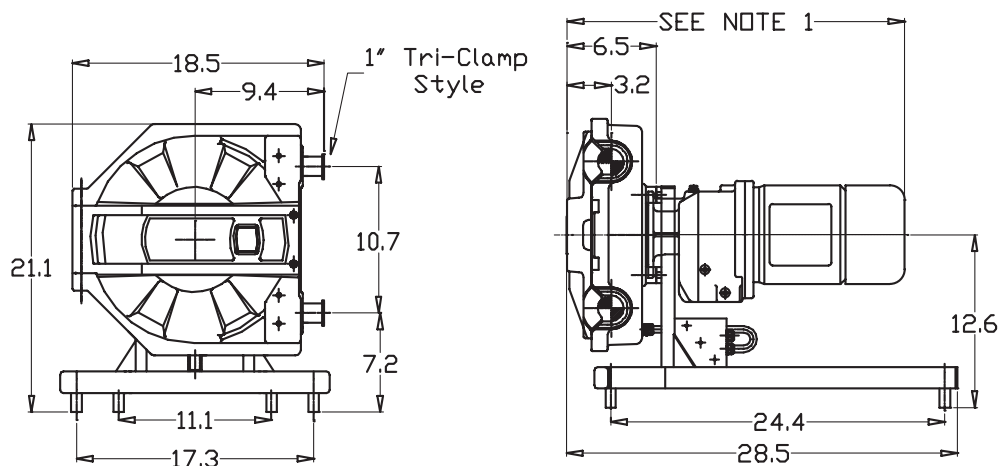


Technical Information and Features

- Flow rates up to 8.8 GPM (33.3 Liters/min) at discharge pressures up to 50 psi continuous, 100 psi intermittent
- Twin retractable rollers for SIP and CIP operation
- Fitted with USP Class VI Certified and FDA Approved Bioprene or StaPure tubing for sanitary operation
- The fluid being pumped does not contact mechanical parts or seals
- Reversible operation
- Only one wearing part: the tube
- Easily and completely cleanable with hinged cover for easy tube access
- No metal to metal contact
- No internal back flow (slip)
- Self priming/dry running
- Ideal for viscous or shear sensitive products
- Fixed speed, pneumatic, or electronic variable speed using optional AC Variable Frequency Drive
- Explosion proof motors available for Fixed Speed or Variable Speed operation
- Optional casters and pushbar for mobile applications

825RG Performance Curve





NOTES:

1. DIMENSION IS DEPENDENT ON SELECTION OF GEARBOX AND MOTOR
2. DIMENSIONS IN INCHES

825RG

Sanitary Peristaltic Metering & Transfer Pump

Specifications

Displacement: 0.088 gallons/rev (0.33 Liters/rev)

Supply: 115 or 240 VAC, 60 Hz, 1-phase, 230/460 or 575 VAC, 3-phase, up to 2 HP

Operating Speeds: Up to 109 rpm

Fluid Temperature Range: 0-80°C (-32°F to 175°F)

Flow Range: Up to 8.8 gpm (33.3 Liters/min)

Discharge Pressure: 50 psi continuous, 100 psi intermittent

Suction Pressure: Up to 28 ft water

***Available Hose Materials:** Bioprene™, Bioprene TH, StaPure™

Available Connectors: 1" Tri-Clamp Style – 316SS or PVDF
1" Male Cam & Groove – 316SS

Door Switch: 50 Watt, 240 VAC max power
(not suitable for XP environments)

Approximate Assembly Weight: 250 Lbs

Materials of Construction

Pumphead Body, Door, Rotor: Aluminum alloy with white epoxy polyester powder coat finish

Rollers: 304 Stainless Steel

All Hardware: Stainless Steel

Frame: Brushed 304 Stainless Steel

Element Retaining Clamps: Aluminum

*TM = Medium Pressure

*TH = High Pressure

Watson-Marlow Bredel Pumps

37 UPTON TECHNOLOGY PARK, WILMINGTON, MA 01887-1018

TEL: 978-658-6168 / FAX: 978-658-0041

www.watson-marlow.com

support@wmbpumps.com