

# ARMA-VIEW® ARMORED PURGE METER

## 1 GENERAL

This Instruction Book provides installation, operation, and maintenance instructions for USFilter's Wallace & Tiernan Products (USF/W&T) ARMA-VIEW Purgemeters, which are variable area (plug and orifice) type flowmeters for low flow rates of liquid or gas. The ARMA-VIEW features a large magnetic coupled dial type indicator for easy reading. It can follow flow surges without loss of magnetic coupling. Dial plates can be changed quickly. Reversible dials with water in GPH units on one side and percent flow of gases or water-like liquids on the other side are standard. Custom dials for direct reading units of any fluid are available.

The ARMA-VIEW is available with or without a built-in control valve, which may be optionally at the meter inlet or outlet. Fluid wetted parts are made of 316 stainless steel or Elgiloy. No welded materials are used. O-ring seals may be Buna-N, Viton, or EPR, as desired. A flow controller (accessory item) is available for use with models having a control valve. A high impact polycarbonate housing protects the dial type flow indicator in tough industrial environments and is suitable for panel mounting. The housing may be removed for servicing meter or for changing flow range without disturbing piping or mounting. A bracket is available as an accessory item for wall or pipe-stand mounting.



**WARNING: TO AVOID POSSIBLE SEVERE PERSONAL INJURY OR DAMAGE TO THE EQUIPMENT THROUGH MISUSE, THIS EQUIPMENT SHOULD BE INSTALLED, OPERATED AND SERVICED ONLY BY TRAINED, QUALIFIED PERSONNEL WHO ARE THOROUGHLY FAMILIAR WITH THE ENTIRE CONTENTS OF THIS INSTRUCTION BOOK.**



**WARNING: WHEN HANDLING HAZARDOUS MATERIALS, USE EXTREME CARE TO AVOID CONTACT WITH THE MATERIAL AND POSSIBLE SEVERE PERSONAL INJURY. IT IS THE RESPONSIBILITY OF THE EQUIPMENT USER TO OBTAIN AND OBSERVE ALL SAFETY PRECAUTIONS RECOMMENDED BY THE MANUFACTURER/SUPPLIER OF THE HAZARDOUS MATERIAL.**

## 2 INSTALLATION

Remove plastic plugs from connections at rear of meter. Connections are 1/4" NPT. Fluid to be metered should be free of particles larger than .0001" (2.5 microns) although non-adhering particles as large as .005 inch may be flushed through. Corrosive fluids should be evaluated for attack against 316 stainless steel (for float Unit A, an Elgiloy orifice is also used). Maximum rate of attack should be less than 0.1 mils. per year; otherwise frequent replacement of float and orifice will be required to maintain accuracy. Mount meter with inlet under outlet and with base plate in vertical plane. Meter may be supported

# ARMA-VIEW® PURGE METER

by piping or mounted on panel supported by four #8-32 screws into tapped holes provided on the meter body. Leave 3 inches clearance above meter to provide access for cleaning. If pointer is not at Ref position, adjust per SERVICE Instructions.



**CAUTION:** Pressure operating limit for the ARMA-VIEW with a valve is 1000 psi; without a valve, the pressure operating limit is 2000 psi. When equipped with a USF/W&T flow controller the pressure limit is reduced to 250 psi. Temperature operating limit is 250°F for Buna-N O-rings, and 275°F for both Viton and EPR O-rings.



**WARNING:** AFTER INSTALLATION, GRADUALLY PRESSURIZE THE FLOWMETER. CHECK FOR AND CORRECT ANY LEAKAGE.



**WARNING:** TO ENSURE PROPER AND SAFE OPERATION OF THIS EQUIPMENT, USE ONLY USF/W&T LISTED PARTS EXCEPT COMMERCIALY AVAILABLE PARTS AS IDENTIFIED BY COMPLETE DESCRIPTION ON PARTS LIST. THE USE OF UNLISTED PARTS CAN RESULT IN EQUIPMENT MALFUNCTIONS CAUSING POSSIBLE SEVERE PERSONAL INJURY.

## 3 OPERATION

In liquid service, after pressurizing, start up at a high flow rate to flush out trapped air or gas. It is important that dissolved gases are not present, particularly at low flow rates. A slowly decreasing flow rate usually is a sign that gas bubbles are forming in the control valve and blocking flow. Bubbles may also form on the float unit, resulting in poor accuracy. Corrective action must be taken if constant flow rates are required over long periods of time without operator attention. A flow controller will not correct this problem. Erratic (sticky) operation may indicate presence of dirt. (See paragraph 4.4, Preventive Maintenance.) A quick flush at maximum flow rate flushes gases and aids in freeing operation if dirt is present. Metering accuracy is dependent on the liquid's specific gravity and viscosity remaining constant at the original dial calibration conditions. Viscosity changes due to temperature changes should be considered.

For smooth operation in gas service there should be no liquid droplets present. All gas rotameters or plug and orifice meters tend to become unstable under certain system conditions as evidenced by bouncing of the float. This situation may occur with large pipe volumes ahead and after the meter, at low metering pressures and at flow rates near the low end of the scale. Best performance is attained with throttling at the meter (i.e. control valve at inlet or outlet) and operating with a metering pressure of at least 10 psi. A bouncing float during system pressurization or other severe flow surges will not damage the meter.

## 4 SERVICE (SEE DWG.510.250.000.010)



**WARNING: TO AVOID POSSIBLE SEVERE PERSONAL INJURY RESULTING FROM CONTACT WITH FLUID, RELIEVE ALL PRESSURE AND DRAIN THE SYSTEM BEFORE SERVICING THE METER.**

### 4.1 General

All service requires removal of flow control knob (1) with 1/16-inch hex key and removal of housing (4) held on by four screws (2). The flow indicator (30) is adjusted vertically by means of screws (33) so that the pointer is at dial REF position at zero flow rate with float and orifice installed.

### 4.2 Cleaning

The indicator mechanism bearings do not require lubrication or adjustment. Return of pointer to same dial position when deflected by hand indicates proper indicator performance. Sticky operation can be improved by flushing bearings using an eyedropper and mild solvent such as alcohol without disassembly.

On meters with top control valve, unscrew valve stem adapter (6) and stem as unit. Using coin or screwdriver remove top plug (12). Insert orifice removal tool (29) down into meter body (11) engaging float stop pin. Unscrew counter-clockwise and lift out orifice (15) and float (14). Remove stop pin and slide out float for cleaning. The orifice or orifice unit should be cleaned carefully in solvent such as alcohol or acetone, avoid using abrasives or metal tools at the metering hole. If replacing a 1.0 gph orifice disk, reassemble as shown in parts drawing with mark on orifice to face down when in meter. Reassemble in reverse order. When reassembled the indicator pointer should again be at reference if orifice is fully seated.

### 4.3 Changing Range

Proceed as above but substitute new float, orifice, and dial parts as required in parts list.

### 4.4 Preventive Maintenance

When cleaning as above, examine the O-ring on the top plug (12). If swollen, cracked or hardened, remove and replace all O-rings. Apply a thin coating of silicone grease U10242 to the O-rings to facilitate assembly. In servicing O-rings on the control valve stem, first remove stem (7) from valve adapter (6) by threading it inward through adapter. Leave stem backed out (full open) when screwing adapter back into meter body. O-rings should be checked at least once a year (more frequently with aggressive fluids) until a history of performance in that application can be established.

# ARMA-VIEW® PURGE METER



**WARNING: WHEN USED IN OXYGEN SERVICE, TO AVOID SEVERE PERSONAL INJURY DUE TO FIRE OR EXPLOSION, LUBRICATE ONLY WITH HALOCARBON LUBRICANT U22886.**

## 5 PARTS ORDERING INFORMATION

The complete ordering number of the meter is marked on the side of the meter body (11) when the meter is assembled in the factory. If field changes are made, the ordering number should be changed to suit. When ordering parts, specify ordering number and serial number on dial, if present. The attached order sheet will show the options and materials furnished.

## WARNING LABELS & TAGS

The following warning labels and tags have been attached to the equipment:

-----  
L2528: TO AVOID POSSIBLE PERSONAL INJURY FROM CONTACT WITH FLUID, DO NOT EXCEED PRESS. AND TEMP. LIMITS: 1000 PSI WITH VALVE, 2000 PSI WITHOUT VALVE AND 275°F MAX. WITH PROPER O-RINGS.  
-----

-----  
L2529: TO AVOID POSSIBLE PERSONAL INJURY, USE METER ONLY WITH THOSE FLUIDS LISTED IN SELECTION GUIDE ACCOMPANYING INSTRUCTION BOOK. SEE INSTRUCTION BOOK FOR FURTHER PRECAUTIONS AND IMPORTANT INSTALLATION AND OPERATING DETAILS.  
-----

-----  
L2575: TO AVOID POSSIBLE PERSONAL INJURY FROM CONTACT WITH FLUID, DO NOT EXCEED PRESS. AND TEMP. LIMITS: 1000 PSI WITH VALVE, 2000 PSI WITHOUT VALVE AND 275°F. MAX. WITH PROPER O-RINGS.  
-----

# ARMA-VIEW® PURGE METER

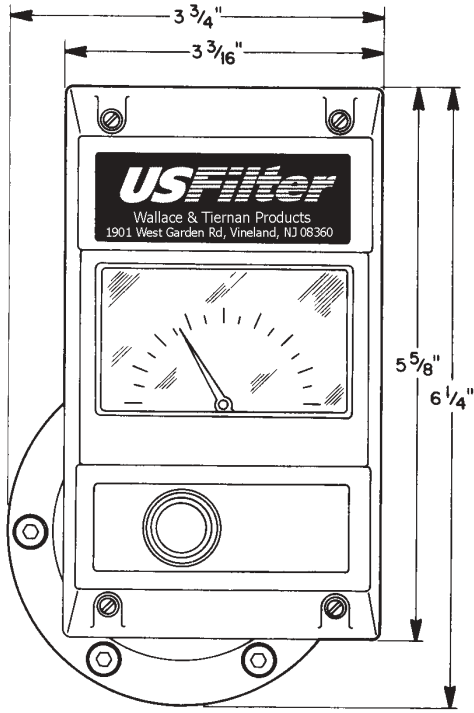
## WARRANTY

Seller warrants for a period of one year after shipment that the equipment or material of its manufacture is free from defects in workmanship and materials. Corrosion or other decomposition by chemical action is specifically excluded as a defect covered hereunder, except this exclusion shall not apply to chlorination equipment. Seller does not warrant (a) damage caused by use of the items for purposes other than those for which they were designed, (b) damage caused by unauthorized attachments or modifications, (c) products subject to any abuse, misuse, negligence or accident, (d) products where parts not made, supplied, or approved by Seller are used and in the sole judgement of the Seller such use affects the products' performance, stability or reliability, and (e) products that have been altered or repaired in a manner in which, in the sole judgement of Seller, affects the products' performance, stability or reliability. SELLER MAKES NO OTHER WARRANTY OF ANY KIND, AND THE FOREGOING WARRANTY IS IN LIEU OF ALL OTHER WARRANTIES, EXPRESS OR IMPLIED, INCLUDING ANY WARRANTY OF MERCHANTABILITY OR OF FITNESS OF THE MATERIAL OR EQUIPMENT FOR ANY PARTICULAR PURPOSE EVEN IF THAT PURPOSE IS KNOWN TO SELLER. If Buyer discovers a defect in material or workmanship, it must promptly notify Seller in writing; Seller reserves the right to require the return of such defective parts to Seller, transportation charges prepaid, to verify such defect before this warranty is applicable. In no event shall such notification be received by Seller later than 13 months after the date of shipment. No action for breach of warranty shall be brought more than 15 months after the date of shipment of the equipment or material.

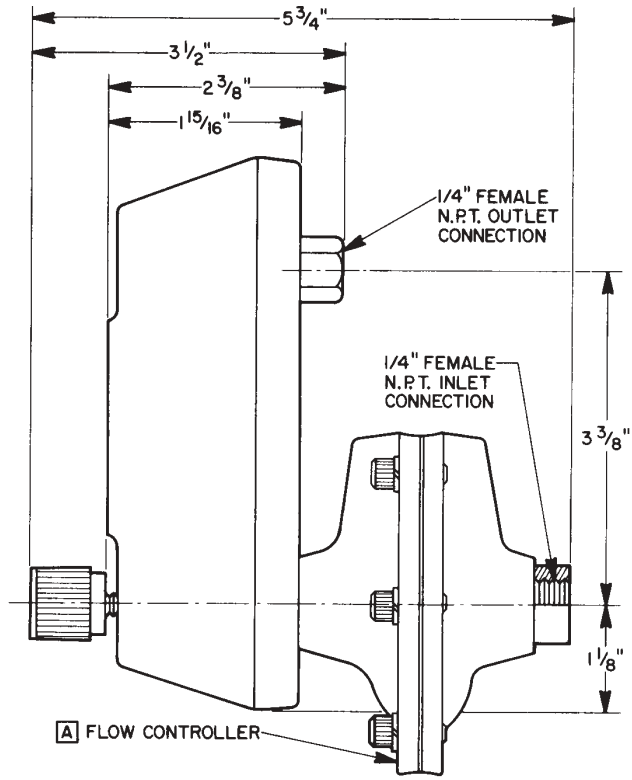
**LIMITATION OF BUYER'S REMEDIES.** The EXCLUSIVE REMEDY for any breach of warranty is the replacement f.o.b. shipping point of the defective part or parts of the material or equipment. Any equipment or material repaired or replaced under warranty shall carry the balance of the original warranty period, or a minimum of three months. Seller shall not be liable for any liquidated, special, incidental or consequential damages, including without limitation, loss of profits, loss of savings or revenue, loss of use of the material or equipment or any associated material or equipment, the cost of substitute material or equipment, claims of third parties, damage to property, or goodwill, whether based upon breach of warranty, breach of contract, negligence, strict tort, or any other legal theory; provided, however, that such limitation shall not apply to claims for personal injury.

Statements and instructions set forth herein are based upon the best information and practices known to Wallace & Tiernan, Inc., but it should not be assumed that every acceptable safety procedure is contained herein. Of necessity this company cannot guarantee that actions in accordance with such statements and instructions will result in the complete elimination of hazards and it assumes no liability for accidents that may occur.

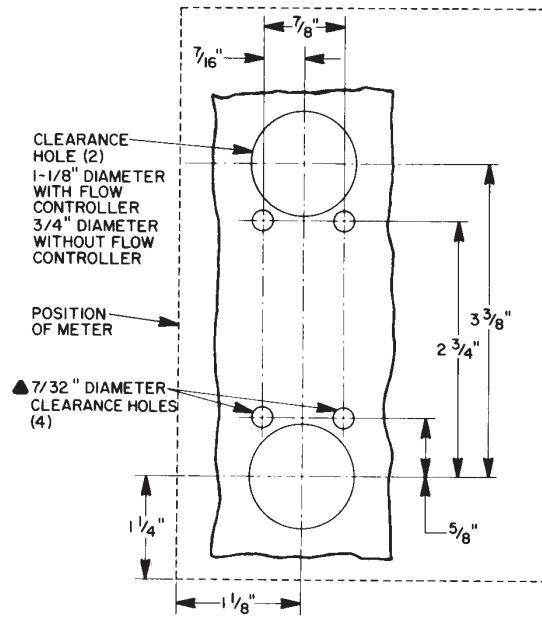
# ARMA-VIEW® PURGE METER



FRONT VIEW



SIDE VIEW



PANEL MOUNTING DETAIL

NOTE: ▲ ARMA-VIEW TAPPED #8-32 x 3/8" DEEP.

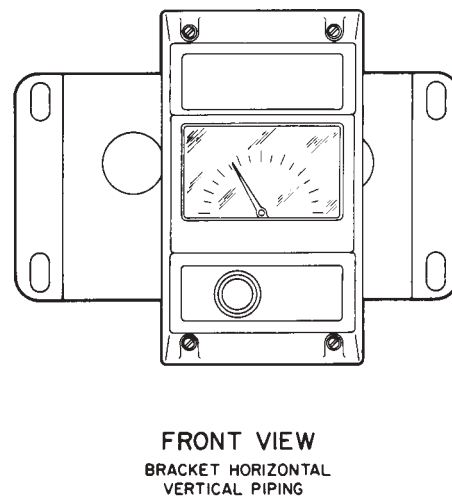
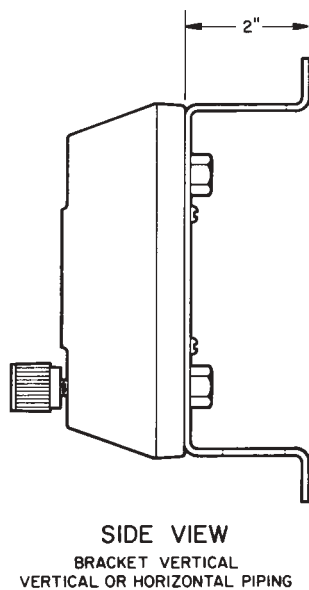
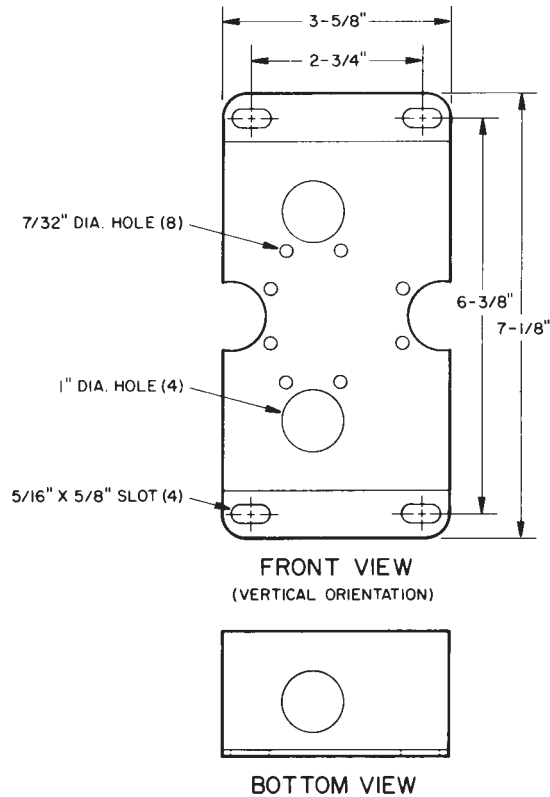
□ ACCESSORY ITEM FURNISHED ONLY IF SPECIFICALLY LISTED IN QUOTATION.

SERIES 51-250 ARMORED PURGE METER - DIMENSIONS

510.250.100.010

ISSUE 3 4-03

# ARMA-VIEW® PURGE METER

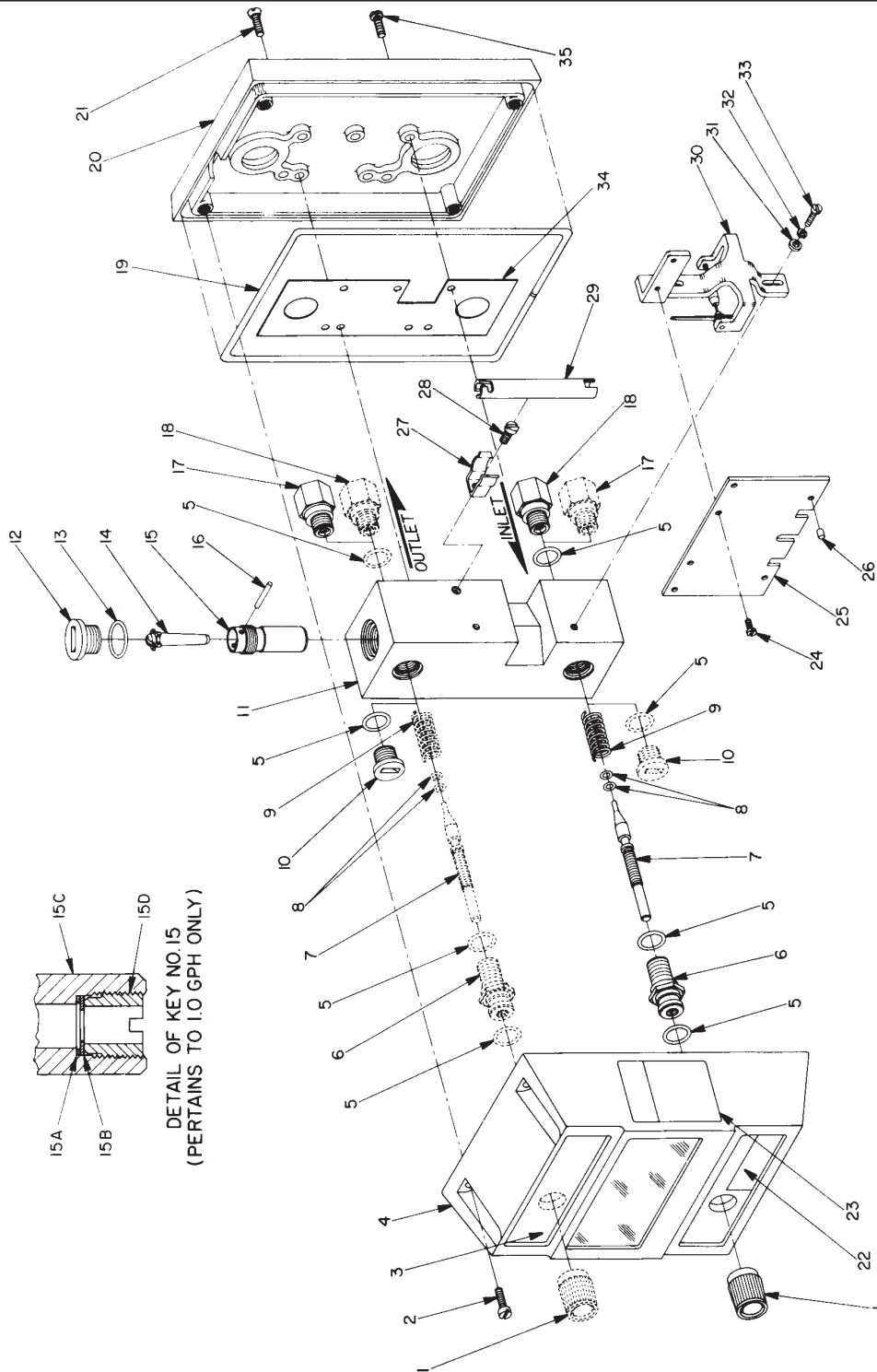


SERIES 51-250 LOW FLOW ARMORED PURGE METER - DIMENSIONS  
Mounting Bracket for Wall or 2" Pipe

510.250.100.020

ISSUE 0 6-92

# ARMA-VIEW® PURGE METER



**NOTE:** FOR INLET OR OUTLET VALVE CONFIGURATION PARTS LISTS, SEE DWGS. 510.250.000.010B&C.  
 FOR CONFIGURATION WITHOUT VALVE PARTS LISTS, SEE DWGS. 510.250.000.010D&E.  
 ----- DOTTED LINES REPRESENT OUTLET VALVE CONFIGURATION.

G1640  
 SERIES 51-250 ARMORED PURGE METER - PARTS

510.250.000.010A

ISSUE 2 4-03

# ARMA-VIEW® PURGE METER

KEY NO.	PART NO.	QTY.	DESCRIPTION
▲ 1	U 26781	1	KNOB
2	P 55662	4	MACH.SCREW (FIL.HD.,SS) 16-32 x 3/8" LG
3	▲ L 2533	1	NAMEPLATE (USED WITH INLET VALVE CONFIGURATION)
	OR		
	L 2528	1	WARNING LABEL (USED WITH OUTLET VALVE CONFIGURATION)
4	NU 1278	1	HOUSING UNIT
▲ 5	P 38437	5	O-RING (013) BUNA-N, 7/16"ID x 9/16"OD
	OR		
	PXA38437	5	O-RING (013) VITON, 7/16"ID x 9/16"OD
	OR		
	PXE38437	5	O-RING (013) EPR, 7/16"ID x 9/16"OD
▲ 6	NP 2727	1	VALVE STEM ADAPTER
▲ 7	NU 1279	1	ADJUSTABLE VALVE STEM (1.0 THRU 3.0 GPH)
	OR		
	NP 2714	1	ADJUSTABLE VALVE STEM (5.0 THRU 40.0 GPH)
▲ 8	P 24161	2	O-RING (006) BUNA-N, 1/8"ID x 1/4"OD
	OR		
	PXA24161	2	O-RING (006) VITON, 1/8"ID 1/4"OD
	OR		
	PXE24161	2	O-RING (006) EPR, 1/8"ID x 1/4"OD
▲ 9	NP 2734	1	SPRING (USED WITH 15.0, 25.0 & 40.0 GPH ONLY)
▲ 10	NP 2722	1	PLUG, 7/16"-20
11	NP 2715	1	METER BODY
12	NP 2723	1	PLUG, 5/8"-18
▲ 13	P 31882	1	O-RING (016) BUNA-N, 5/8"ID x 3/4"OD
	OR		
	PXA31882	1	O-RING (016) VITON, 5/8"ID x 3/4"OD
	OR		
	PXE31882	1	O-RING (016) EPR, 5/8"ID x 3/4"OD
▲ 14	◆ NUXB1309	9	FLOAT UNIT B (1.0 GPH) WATER/(5.7 SCFH) AIR
	OR		
	■ NUXC1281	1	FLOAT UNIT C (3.0 GPH) WATER/(17.5 SCFH) AIR
	OR		
	● NUXD1281	1	FLOAT UNIT D (5.0 GPH) WATER/(26.0 SCFH) AIR
	OR		
	▼ NUXE1281	1	FLOAT UNIT E (8.0 GPH) WATER/(39.0 SCFH) AIR
	OR		
	□ NUXA1282	1	FLOAT UNIT F (15.0 GPH) WATER/(73.6 SCFH) AIR
	OR		
	○ NUXB1282	1	FLOAT UNIT G (25.0 GPH) WATER/(116.0 SCFH) AIR
	OR		
	* NUXC1282	1	FLOAT UNIT H (40.0 GPH) WATER/(167.0 SCFH) AIR
▲ 15	◆ NU 1308		ORIFICE UNIT (1.0 GPH) INCLUDES 15A THRU 15D

**NOTE:** FLOAT/ORIFICE CAPACITY LETTER MARKED ON TOP OF FLOAT.  
 ▲ NOT PART OF G 1640. ● INCLUDED IN ALL FLOAT & ORIFICE SETS.  
 PART OF FLOAT & ORIFICE SET: ◆ NU 1350 ■ NU 1351. ● NU 1352 ▼ NU 1353  
 □ NU 1354 ○ NU 1355 \* NU 1356

WHEN ORDERING MATERIAL, ALWAYS SPECIFY MODEL AND SERIAL NUMBER OF APPARATUS.

G1640  
 SERIES 51-250 ARMORED PURGE METER - PARTS LIST  
 With Inlet or Outlet Valve

510.250.000.010B

ISSUE 4 4-03

# ARMA-VIEW® PURGE METER

KEY NO.	PART NO.	QTY.	DESCRIPTION
15A	NP 2752	1	ORIFICE GASKET
15B	NP 2753	1	ORIFICE DISC
15C	NP 2751	1	ORIFICE HOLDER
15D	NP 2754	1	ORIFICE RETAINER
	OR		
▼●	■ NU 1348	1	ORIFICE (3.0 THRU 3.0 GPH)
	OR		
*○	□ NU 1349	1	ORIFICE (15.0 THRU 40.0 GPH)
● 16	NP 2731	1	FLOAT STOP PIN
17	NPXA2272	1	VALVE SEAT (15.0 THRU 40.0 GPH)
▲ 18	NP 2726	1	VALVE SEAT (1.0 THRU 3.0 GPH)
	OR		
	NPXA2271	1	VALVE SEAT (5.0 THRU 8.0 GPH)
	OR		
	NPXA2272	1	VALVE SEAT (15.0 THRU 40.0 GPH)
19	RK31 2220	1	GASKET (1'-6" LG)
20	NP 2729	1	BASEPLATE
21	P 43702	3	MACH.SCREW (FLAT HD.,SS) #8-32 x 3/8" LG
22	L 2533	1	NAMEPLATE (USED WITH OUTLET VALVE CONFIGURATION)
	OR		
	▲ L 2528	1	WARNING LABEL (USED WITH INLET VALVE CONFIGURATION)
23	L 2529	1	WARNING LABEL
24	PE 48058	2	MACH.SCREW (PAN.HD.,SS) #4-40 3/16" LG
▲ 25	NPXB 2719	1	DIAL (1.0 GPH)
	OR		
	NPXC 2719	1	DIAL (3.0 GPH)
	OR		
	NPXD 2719	1	DIAL (5.0 GPH)
	OR		
	NPXE 2719	1	DIAL (8.0 GPH)
	OR		
	NPXF 2719	1	DIAL (15.0 GPH)
	OR		
	NPXG 2719	1	DIAL (25.0 GPH)
	OR		
	NPXH 2719	1	DIAL (40.0 GPH)
26	NP 2732	2	POINTER STOP
27	NP 2748	1	FUSE CLIP
28	P 44552	1	MACH.SCREW (FIL.HD.,SS) #8-32 x 1/4" LG
29	NP 2747	1	ORIFICE TOOL
30	NU 1283	1	INDICATOR MECHANISM
31	P 41942	2	#4 WASHER (SS)
32	P 15362	2	#4 LOCKWASHER (SS)
33	P 46702	2	MACH.SCREW (PAN.HD.,SS) #4-40 x 5/16" LG
34	NP 2796	1	GASKET
35	FP 2431	4	MACH.SCREW (PAN.HD.,SS) #8-32 x 1/2" LG

**NOTE:** FLOAT/ORIFICE CAPACITY LETTER MARKED ON TOP OF FLOAT.  
 ▲ NOT PART OF G 1640. ● INCLUDED IN ALL FLOAT & ORIFICE SETS.  
 PART OF FLOAT & ORIFICE SET: ◆ NU 1350 ■ NU 1351. ● NU 1352 ▼ NU 1353  
 □ NU 1354 ○ NU 1355 \* NU 1356

WHEN ORDERING MATERIAL, ALWAYS SPECIFY MODEL AND SERIAL NUMBER OF APPARATUS.

G1640  
 SERIES 51-250 ARMORED PURGE METER - PARTS LIST  
 With Inlet or Outlet Valve

510.250.000.010C

ISSUE 4 4-03

# ARMA-VIEW® PURGE METER

KEY NO.	PART NO.	QTY.	DESCRIPTION
2	P 55662	4	MACH.SCREW (FIL.HD.,SS) 16-32 x 3/8" LG
3	L 2533	1	NAMEPLATE (USED WITH INLET VALVE CONFIGURATION)
4	NU 1278	1	HOUSING UNIT
▲ 5	P 38437	5	O-RING (013) BUNA-N, 7/16"ID x 9/16"OD
	OR		
	PXA38437	5	O-RING (013) VITON, 7/16"ID x 9/16"OD
	OR		
	PXE38437	5	O-RING (013) EPR, 7/16"ID x 9/16"OD
▲ 10	NP 2722	1	PLUG, 7/16"-20
11	NP 2715	1	METER BODY
12	NP 2723	1	PLUG, 5/8"-18
▲ 13	P 31882	1	O-RING (016) BUNA-N, 5/8"ID x 3/4"OD
	OR		
	PXA31882	1	O-RING (016) VITON, 5/8"ID x 3/4"OD
	OR		
	PXE31882	1	O-RING (016) EPR, 5/8"ID x 3/4"OD
▲ 14	NUXB1309	9	FLOAT UNIT B (1.0 GPH) WATER/(5.7 SCFH) AIR
	OR		
	NUXC1281	1	FLOAT UNIT C (3.0 GPH) WATER/(17.5 SCFH) AIR
	OR		
	NUXD1281	1	FLOAT UNIT D (5.0 GPH) WATER/(26.0 SCFH) AIR
	OR		
	NUXE1281	1	FLOAT UNIT E (8.0 GPH) WATER/(39.0 SCFH) AIR
	OR		
	NUXA1282	1	FLOAT UNIT F (15.0 GPH) WATER/(73.6 SCFH) AIR
	OR		
	NUXB1282	1	FLOAT UNIT G (25.0 GPH) WATER/(116.0 SCFH) AIR
	OR		
	NUXC1282	1	FLOAT UNIT H (40.0 GPH) WATER/(167.0 SCFH) AIR
▲ 15	NU 1308	1	ORIFICE UNIT (1.0 GPH) INCLUDES 15A THRU 15D
15A	NP 2752	1	ORIFICE GASKET
15B	NP 2753	1	ORIFICE DISC
15C	NP 2751	1	ORIFICE HOLDER
15D	NP 2754	1	ORIFICE RETAINER
	OR		
▼●	■ NU 1348	1	ORIFICE (3.0 THRU 3.0 GPH)
	OR		
*○	□ NU 1349	1	ORIFICE (15.0 THRU 40.0 GPH)

**NOTE:** FLOAT/ORIFICE CAPACITY LETTER MARKED ON TOP OF FLOAT.  
 ▲ NOT PART OF G 1640. ● INCLUDED IN ALL FLOAT & ORIFICE SETS.  
 PART OF FLOAT & ORIFICE SET: ◆ NU 1350 ■ NU 1351. ● NU 1352 ▼ NU 1353  
 □ NU 1354 ○ NU 1355 \* NU 1356

WHEN ORDERING MATERIAL, ALWAYS SPECIFY MODEL AND SERIAL NUMBER OF APPARATUS.

G1640  
 SERIES 51-250 ARMORED PURGE METER - PARTS LIST  
 Without Valve

510.250.000.010D

ISSUE 0 4-03

# ARMA-VIEW® PURGE METER

KEY NO.	PART NO.	QTY.	DESCRIPTION
● 16	NP 2731	1	FLOAT STOP PIN
17	NPXA2272	1	VALVE SEAT (15.0 THRU 40.0 GPH)
19	RK31 2220	1	GASKET (1'-6" LG)
20	NP 2729	1	BASEPLATE
21	P 43702	3	MACH.SCREW (FLAT HD.,SS) #8-32 x 3/8" LG
22	L 2575	1	WARNING LABEL
23	L 2529	1	WARNING LABEL
24	PE 48058	2	MACH.SCREW (PAN.HD.,SS) #4-40 3/16" LG
▲ 25	NPXB 2719	1	DIAL (1.0 GPH)
	OR		
	NPXC 2719	1	DIAL (3.0 GPH)
	OR		
	NPXD 2719	1	DIAL (5.0 GPH)
	OR		
	NPXE 2719	1	DIAL (8.0 GPH)
	OR		
	NPXF 2719	1	DIAL (15.0 GPH)
	OR		
	NPXG 2719	1	DIAL (25.0 GPH)
	OR		
	NPXH 2719	1	DIAL (40.0 GPH)
26	NP 2732	2	POINTER STOP
27	NP 2748	1	FUSE CLIP
28	P 44552	1	MACH.SCREW (FIL.HD.,SS) #8-32 x 1/4" LG
29	NP 2747	1	ORIFICE TOOL
30	NU 1283	1	INDICATOR MECHANISM
31	P 41942	2	#4 WASHER (SS)
32	P 15362	2	#4 LOCKWASHER (SS)
33	P 46702	2	MACH.SCREW (PAN.HD.,SS) #4-40 x 5/16" LG
34	NP 2796	1	GASKET
35	FP 2431	4	MACH.SCREW (PAN.HD.,SS) #8-32 x 1/2" LG

**NOTE:** FLOAT/ORIFICE CAPACITY LETTER MARKED ON TOP OF FLOAT.  
 ▲ NOT PART OF G 1640. ● INCLUDED IN ALL FLOAT & ORIFICE SETS.  
 PART OF FLOAT & ORIFICE SET: ◆ NU 1350 ■ NU 1351. ● NU 1352 ▼ NU 1353  
 □ NU 1354 ○ NU 1355 \* NU 1356

WHEN ORDERING MATERIAL, ALWAYS SPECIFY MODEL AND SERIAL NUMBER OF APPARATUS.

G1640  
 SERIES 51-250 ARMORED PURGE METER - PARTS LIST  
 Without Valve

510.250.000.010E

ISSUE 0 4-03