



PetroProof SP10/10 and SP10/15 Hose Pumps for Hydrocarbons

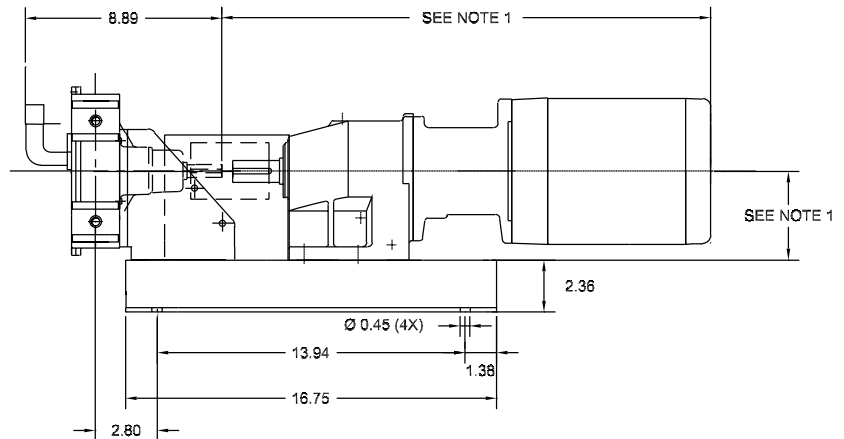
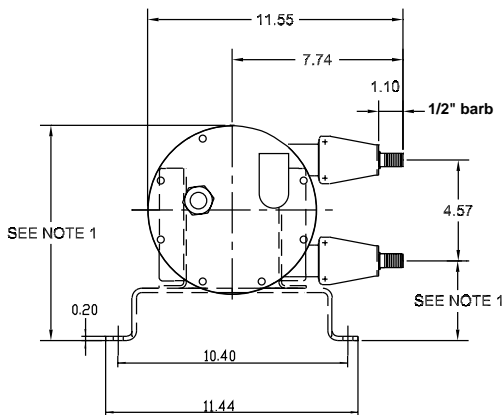
Features and Benefits

- **Highly suitable for:**
 - hydrocarbons, oils, solvents, acids and bases
 - shear sensitive products
 - viscous products
 - abrasive and high density products
 - vacuum situations
- **Can run dry continuously**
- **Most suitable for handling shear sensitive products**
- **Accurate (+1%) dosing (metering) capabilities**
- **Smooth liquid passage without valves, dead corners or glands**
- **The material to be pumped does not contact mechanical parts or seals**
- **Easy maintenance, low cost, short down time**
- **Only one wearing part: the hose**
- **Easily and completely cleanable**
- **Easily adjustable and reversible rotation**
- **No metal contact or valves**
- **Safe for use in explosive environments**
- **No internal back flow (slip)**
- **Self priming to 95% vacuum**
- **One year comprehensive warranty**

Performance Characteristics

PetroProof hose pump	10/10	10/15
Inner diameter pump hose [mm]	10	15
Capacity [gal/min]	0.11-0.58	0.19-0.95
Number of revolutions [rpm]	15-75	15-75
Starting torque [in-lbs]	1060	1060
Running torque @72.5psi [in-lbs]	124	124

Standard configuration for SP10/10 is geared at 32.5 rpm with 3/4 Hp motor. Standard configuration for SP10/15 is geared at 40.6 rpm with 3/4 Hp motor. Consult Watson-Marlow Bredel for alternative configurations.



Notes:

1. Dimension is dependent on selection of gearbox and/or motor
2. All Dimensions in inches

PetroProof SP10/10 and SP10/15 Hose Pumps for Hydrocarbons

Technical Specifications

Displacement: SP10/10 0.0077 gal/rev
SP10/15 0.0127 gal/rev

Supply: 115/230 VAC 1-phase or
230/460 or 575 VAC 3-phase

Operating Speeds: up to 75 rpm

Fluid Temperature Range*: 14° to 104°F

Ambient Temperature Range:** -4° to 113°F

Hose Lubricant Required: 0.06 gallons

Flow Range: SP10/10 up to 0.58 gpm
SP10/15 up to 0.95 gpm

Discharge Pressure: up to 72.5 psi

Suction Pressure: 28 ft. lift to 30 psi

Available Hose Materials: PetroProof

Available Insert Materials: 316SS

Fittings: 1/2" SS hose barb

Materials of Construction

Pumphead: Cast iron

Rotor/Shoes: Cast iron

Cover: Cast iron

Flanges and Flange Brackets: Galvanized steel

Frame: 304SS

Hardware: Galvanized steel or 304SS

Shaft: Alloy steel

Seals: NBR

Coupling Guard: 304SS

Pumphead Weight: 20 lbs

Estimated Assembly Weight: 105 lbs

*Consult Watson-Marlow Bredel for lower or higher temperature operation

**Allowable ambient temperature is based on pump capabilities and may be further limited by gearmotor ambient capabilities.

The information contained in this document is believed to be correct, but Watson-Marlow Bredel Pumps accepts no liability for any errors it contains, and reserves the right to alter specifications without notice.

Watson-Marlow Bredel Pumps

37 UPTON TECHNOLOGY PARK, WILMINGTON, MA 01887-1018
TEL: 800-282-8823, 978-658-6168 / FAX: 978-658-0041
<http://www.watson-marlow.com>