

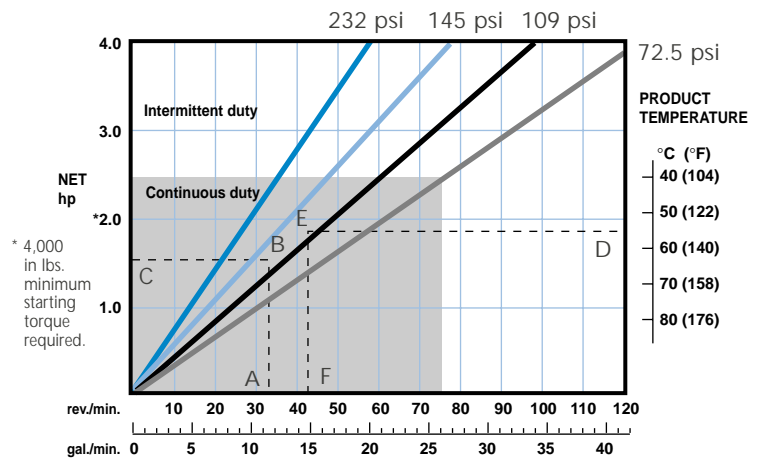


## SPX40 High-Pressure Hose Pumps

### Features and Benefits

- High-strength, twin-bearing hub integrated into the pumphead
- Rotor always fully and centrally supported by its own bearings
- Fail-safe shaft design
- New flat shim and improved epoxy shoe design
- Faster hose changing and improved sealing
- Easy access to shims and shoes
- Unique buffer zone provides protective barrier between pumphead and gearing
- Patented direct-coupled design
- Ultra compact planetary gearing
- No drive alignment for faster set-up
- No coupling or baseplate for compact footprint
- Adapter available for fitting hydraulic or pneumatic motors
- Improved frame design
- Increased corrosion resistance
- Compact design, low maintenance,
- Two year warranty

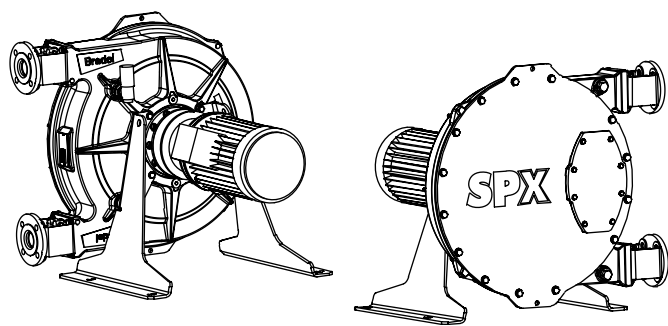
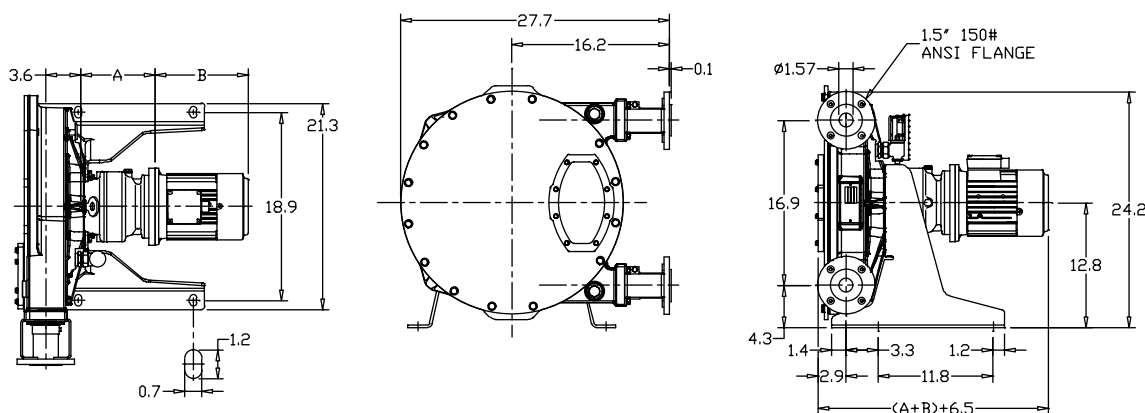
### Performance Chart



How to calculate speed/horsepower

- A Flow required, indicates pump speed
- B Calculated discharge pressure
- C Horsepower required
- D Fluid temperature
- E Calculated discharge pressure
- F Maximum recommended pump speed\*\*

\*\* For maximum hose life, speed point (A) should be lower than temperature adjusted speed point (F). See example points (A) thru (F).



**NOTES:**

1. ALL DIMENSIONS ARE FOR REFERENCE ONLY.
2. WHEN INSTALLING, ALLOW 45-58° LINEAR CLEARANCE TO FLANGE FOR HOSE CHANGING.

GEAR REDUCER	INPUT FRAME	A	VT. LBS.	MOTOR P/N	B	FRAME	HP	ENCLOSURE	VT. LBS.
GRD200	56C	8.07	44	P14G9257	10.9	145TC	1.5	TEFC-EM	38
	140TC	8.07	44	P14X1485	12.5	145TC	1.5	TEFC-XE	38
	180TC	8.58	53	P14X3254	10.6	145TC	1.5	TEFC-EMT	41
	210TC	8.58	53	P14G7530	11.9	145TC	1.5	TEFC-XEX	80
GR1300	56C	9.61	52	P14X4516	10.8	145TC	1.5	NVEZ-EM+	40
	140TC	9.61	52	P14J3633	11.5	145TC	1.5	FCXP	44
	180TC	10.12	61	P14X9128	11.8	145TC	1.5	FCXP-EMT	52
	210TC	10.12	61	P14G9258	11.5	145TC	2.0	TEFC-EM	44
SPX40 Pumphead			258	P14X1487	13.5	145TC	2.0	TEFC-XE	49
				P14X3256	11.5	145TC	2.0	TEFC-EMT	43
				P14G7532	11.9	145TC	2.0	TEFC-XE	125
				P14X4511	10.8	145TC	2.0	FCEZ-EM+	46
				P14J2446	12.6	145TC	2.0	FCXP	70
				P14X9129	12.7	145TC	2.0	FCXP-EMT	55
				P18G3882	14.5	182TC	3.0	TEFC-EM	110
				P18G1132	14.5	182TC	3.0	TEFC-XE	118
				P18G3888	14.5	182TC	3.0	TEFC-EMT	110
				P18G1123	14.5	182TC	3.0	TEFC-XEX	125
				P14X3049	13.8	145TC	3.0	FCEZ-EM+	50
				P18G2521	15.3	182TC	3.0	FCXP	82
				P18G3883	14.5	184TC	5.0	TEFC-EM	120
				P18G1133	14.5	184TC	5.0	TEFC-XE	118
				P18G3889	14.5	184TC	5.0	TEFC-EMT	120
				P18G1124	14.5	184TC	5.0	TEFC-XEX	125
				P18G3864	13.8	184TC	5.0	FCEZ-EM+	135
				P18G105L	15.3	184TC	5.0	FCXP	125

Note: Dimensions shown are based on the standard pump and motor configuration. Overall length may vary depending on actual motor selection.

## SPX40 High-Pressure Hose Pumps

### Technical Specifications

- Displacement: 0.351 gal/rev
- Supply: 115/230 single phase or 230/460 or 575 three phase
- Operating Speeds: Up to 75 rpm continuous  
Up to 110 rpm intermittent
- Fluid Temperature Range: -4° to 175°F
- Hose Lubricant Required: 1.3 gallons
- Flow Range: Up to 39 gpm
- Discharge Pressure: Up to 232 psi
- Suction pressure: 28 ft. lift to 45 psi
- Available Hose Materials: Natural Rubber, BUNA N, BUNA K, EPDM, Hypalon
- Available Insert Materials: Polypropylene, 316 SS, PVDF, PVC
- Fittings: 1.5" 150# Flange

### Materials of Construction

- Pumphead: Cast iron
- Rotor: Cast iron
- Cover: Mild steel
- Hub: Cast iron
- Shoes: Epoxy
- Flanges and Flange Brackets: Galvanized steel or 304 SS
- Frame: Galvanized steel or 304 SS
- Hardware: Zinc plated steel or 304 SS
- Shaft: Alloy steel
- Shims: 316 SS
- Seals: NBR

The information contained in this document is believed to be correct, but Watson-Marlow/Bredel Pumps accepts no liability for any errors it contains, and reserves the right to alter specifications without notice.



### Watson-Marlow, Inc.

37 UPTON TECHNOLOGY PARK, WILMINGTON, MA 01887-1018  
 TEL: 800-282-8823, 978-658-6168 / FAX: 978-658-0041  
<http://www.watson-marlow.com>